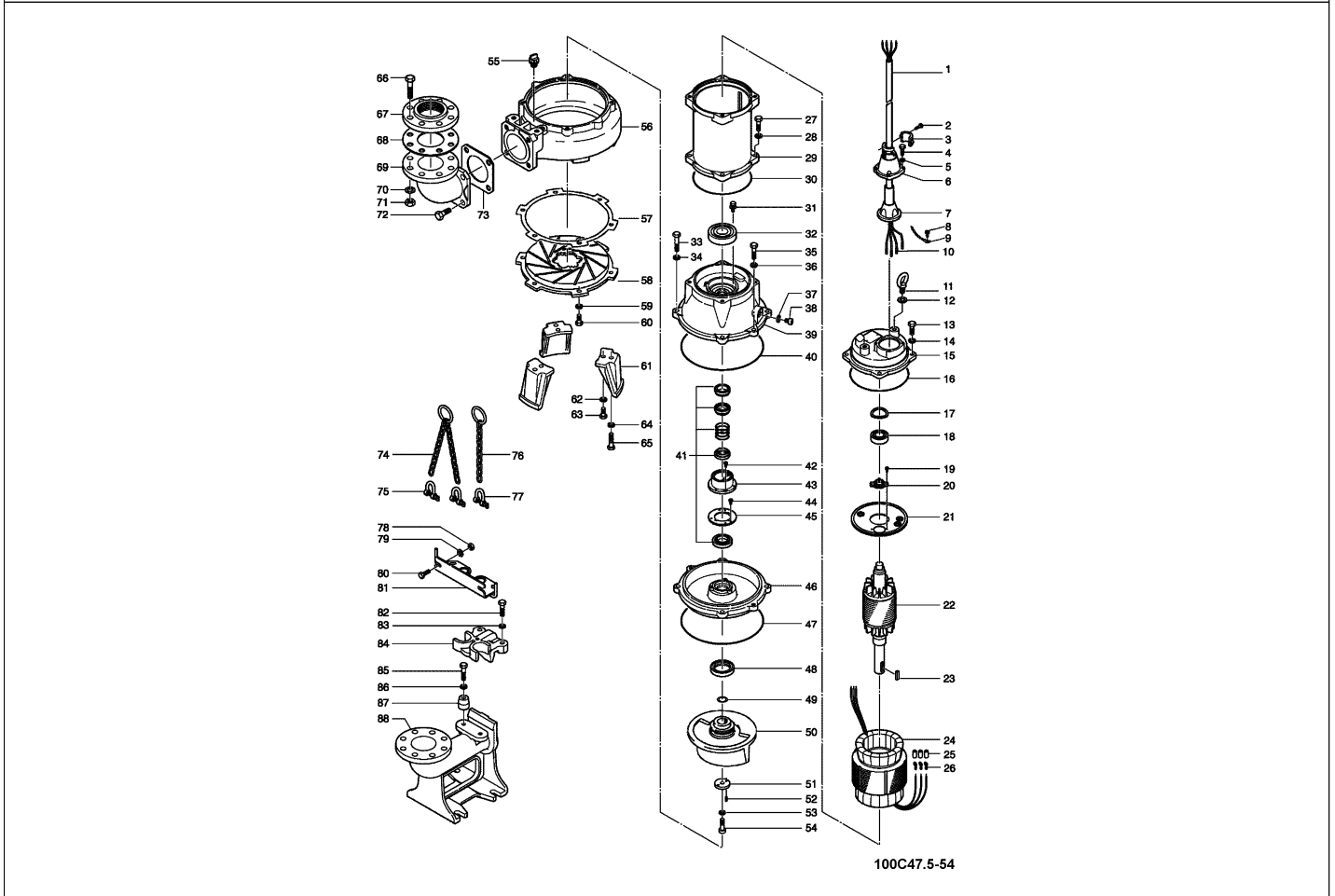


100C47.5-54

2025-03-04

Pos.no	Item no.	Description	Qty.
--------	----------	-------------	------



Pos.no	Item no.	Description	Qty.
		Packing & O-Ring Set	
1	173-001-22	Cabletyre Cable Set (20m) H07RN-F4Cx2,5mm ² without stuffing box	1
1	001-TEG-09	Cabletyre Cable Set (20m) NSSHÖU 4Cx2,5mm ²	1
2	140-035-14	Hex.Bolt M6x20 SUS304 (EN X5CrNi18-10) Stainless	2
3	070-107-18	Cable Clamp FC	1
4	140-056-11	Hex.Bolt M8x30 SUS304 (EN X5CrNi18-10) Stainless	4
5	142-163-18	Spring Washer M8 SUS304	4
6	006-126-14	Stuffing Box No.2 FC	1
7	008-136-13	Mould Cover KR2-1 CR	1
8	143-085-21	Pan Screw (w/Spring Washer) M4x6 SWRM	1
9	009-294-13	Earth Terminal 3.5mmx170L	1
10	009-275-18	Compression type Terminal TGNB-5.5(Insulated) CU	4
11	072-107-27	Eye Bolt M16 SUS304	2
12	142-399-15	Washer d17xd29x0.1t SUS304 (EN X5CrNi18-10) Stainless Steel	1
	142-400-10	Washer d17xd29x0.3t SUS304 (EN X5CrNi18-10) Stainless Steel	1
13	140-098-15	Hex.Bolt M12x35 SUS304	4
14	142-165-10	Spring Washer M12 SUS304 (EN X5CrNi18-10) Stainless Steel	4
15	050-001-21	Motor Bracket FC200	1
16	122-173-19	O-Ring V-225 NBR	1
17	142-198-12	Wave Washer 6306 SK5	1
18	052-000-25	Bearing AC-6306ZZC3	1
19	143-126-25	Pan Screw (w/Spring Washer/Plain Washer) M4x12 SWRM	2
20	053-192-17	Motor Protector 220V-60HZ KA314-HKXL00 (B.C)	1
21	058-000-09	Lead Wire Protection Plate d80xd224x1.6t (SPHC)	1
22	055-000-08	Rotor	1
23	147-163-13	Impeller Key 10x8x32L SUS420 (EN X20Cr13) Stainless Steel	1
24	056-000-02	Stator 380/400/415V-50Hz	1
	181-000-03	Cable Tie T50S,158Lx4.7Bx35D Nylon	2
25	002-000-83	Cable Protection Tube NFG-1A,d7 (V/m)	1
26	009-000-31	Terminal R-5.5-54 CU	3
27	140-100-11	Hex.Bolt M12x45 SUS304 (EN X5CrNi18-10) Stainless Steel	4
28	142-165-10	Spring Washer M12 SUS304 (EN X5CrNi18-10) Stainless Steel	4
29	064-000-71	Motor Frame FC	1
30	122-173-19	O-Ring V-225 NBR	1
31	140-000-06	Hex.Bolt (w/Spring Washer/Plain Washer) M6x12 SWCH	3
32	052-001-08	Bearing 6309ZZC3	1
33	140-104-15	Hex.Bolt M12x65 SUS304 (EN X5CrNi18-10) Stainless Steel	4
34	142-165-10	Spring Washer M12 SUS304 (EN X5CrNi18-10) Stainless Steel	4
35	140-099-16	Hex.Bolt M12x40 SUS304	2
36	142-165-10	Spring Washer M12 SUS304 (EN X5CrNi18-10) Stainless Steel	2

100C47.5-54

Kontroll-Nr. --

2025-03-04 V.01.02.2025

Pos.no	Item no.	Description	Qty.
37	121-247-12	Packing d12.3xd18x2t PE	2
38	035-113-18	Oil Plug M12x14 SUS304 (EN X5CrNi18-10) Stainless Steel	2
39	060-002-31	Bearing Housing FC200 (EN-GJL-200)	1
40	122-159-19	O-Ring (Brq.Housing/O.Casing) G-280(279.3xd5.7) NBR	1
41	025-001-11	Mechanical Seal H-35A SiC+CCBN	1
42	143-070-23	Pan Screw M5x6 SWRM	2
43	030-156-18	Oil Lifter H-35(A)(T) Resin	1
44	143-070-10	Pan Screw M5x6 SWRM	3
45	030-150-12	Seal Stopper H-35(A)(T) SPCC	1
46	029-187-14	Oil Casing 100-5.5/7.5-4B2 FC	1
47	122-159-19	O-Ring (Brq.Housing/O.Casing) G-280(279.3xd5.7) NBR	1
48	026-115-12	Oil Seal TC-608212 NBR	1
49	040-124-18	Impeller Shim d25.2xd34x0.3t SUS304 (EN X5CrNi18-10) Stainless Steel	1
50	021-809-15	Impeller (50Hz) FC	1
51	142-202-10	Impeller Fixing Washer d13xd50x15t SUS304 (EN X5CrNi18-10) Stainless Steel	1
52	144-530-16	Hex. Socket Cap Screw M6x15 SUS304 (EN X5CrNi18-10) Stainless Steel	2
53	142-000-22	Spring Washer M12(CP) SUS304 (EN X5CrNi18-10) Stainless	1
54	140-304-17	Hex. Socket Cap Bolt M12x45 SUS304 (EN X5CrNi18-10) Stainless Steel	1
55	046-107-13	Air Release Valve PT-1/2 Nylon	1
56	020-531-23	Pump Casing 100-5.5/7.5-4B2 FC	1
57	120-102-11	Packing (S.Cover) d301xd328x0.3t PE	1
58	022-330-26	Suction Cover 55/110-CE2 FCD	1
59	142-165-10	Spring Washer M12 SUS304 (EN X5CrNi18-10) Stainless Steel	6
60	140-097-14	Hex.Bolt M12x30 SUS304	6
61	023-288-18	Pump Stand 55/110-CE2 FC	3
62	142-165-10	Spring Washer M12 SUS304 (EN X5CrNi18-10) Stainless Steel	3
63	140-097-14	Hex.Bolt M12x30 SUS304	3
64	142-165-10	Spring Washer M12 SUS304 (EN X5CrNi18-10) Stainless Steel	3
65	140-099-16	Hex.Bolt M12x40 SUS304	3
66	140-000-56	Hex.Bolt M16x75 SWRM	8
67	048-000-40	Screwed FlangeJIS10Kx100mm FC	1
68	121-106-34	Packing JIS10Kx100mm NR	1
69	037-000-32	Discharge Bend(For 100mm)100x100mm(S-4) FC	1
70	142-166-37	Spring Washer M16 SWRH	8
71	141-008-11	Hex.Nut M16 SUS304 (EN X5CrNi18-10)	8
72	140-124-11	Hex.Bolt M16x40 SUS304 (EN X5Cr18-10)	4
73	121-153-10	Packing 160mm2(P.C.165) NBR	1
74	095-000-35	Chain 9mm(10L) SS	1
75	011-000-16	Shackle 12mm SS	2
76	095-176-28	Chain 9mmx5m SS	1
77	011-000-16	Shackle 12mm SS	1
78	141-007-10	Hex.Nut M12 SUS304	2
79	142-129-12	Plain Washer M12 SUS304	2
80	140-099-32	Hex.Bolt M12x40 SUS304 (EN X5CrNi18-10) Stainless Steel	2
81	094-210-19	Guide Support TOS-100C SUS304 (EN X5CrNi18-10) Stainless Steel	1
82	140-129-16	Hex.Bolt M16x65 SUS304 (EN X5CrNi18-10) Stainless Steel	2
83	142-166-11	Spring Washer M16 SUS304	2
84	093-110-15	Guide Hook TOS-100 FCD	1
85	140-103-14	Hex.Bolt M12x60 SUS304 (EN X5CrNi18-10) Stainless Steel	2
86	142-165-10	Spring Washer M12 SUS304 (EN X5CrNi18-10) Stainless Steel	2
87	096-102-13	Guide Connector 51mm SS	2
88	091-000-48	Duck Foot Bend TOS-100 FC	1
	##oilVG32	ml Turbine Oil ISO VG32	4200
	173-001-22	Packing & O-Ring Set	1